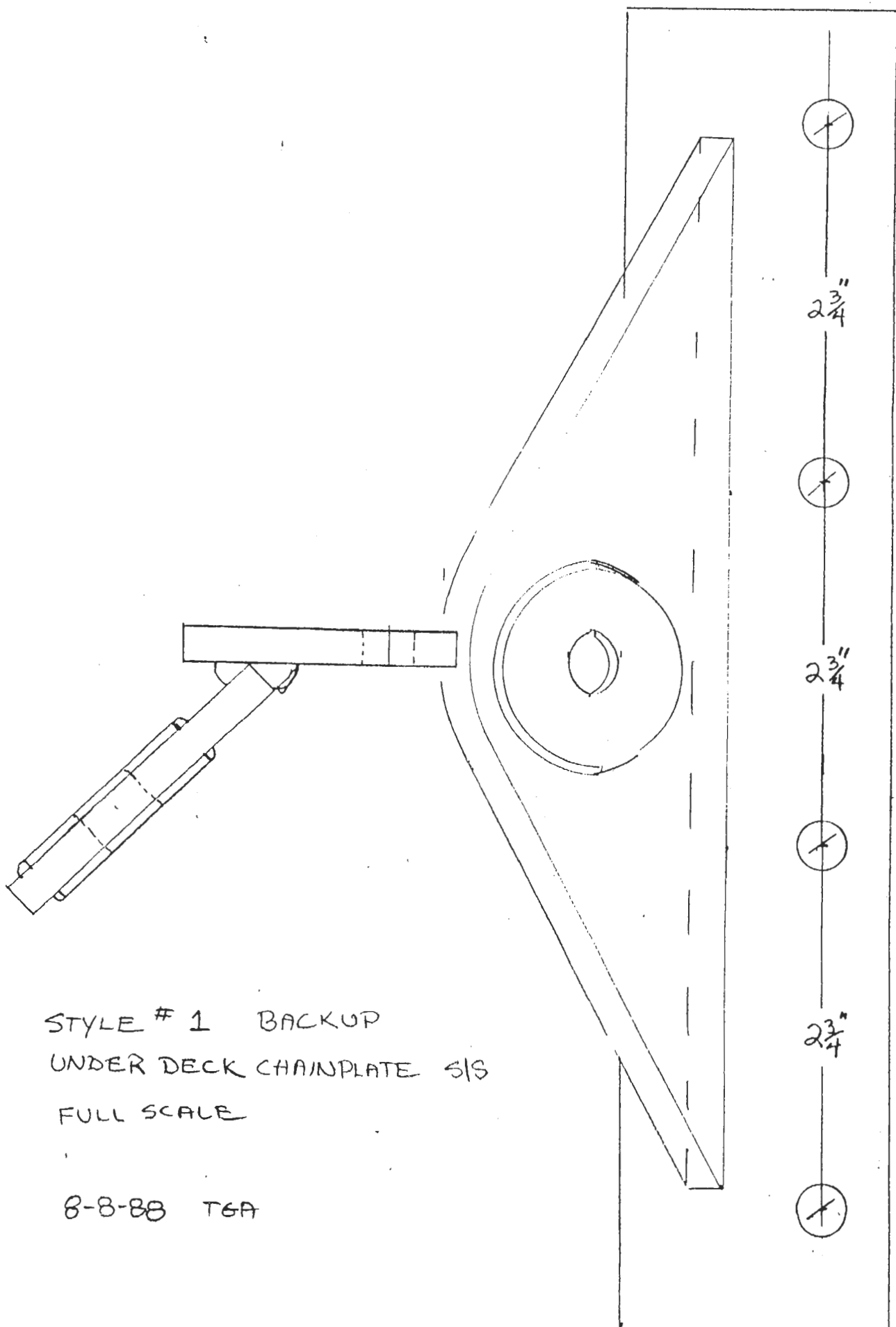


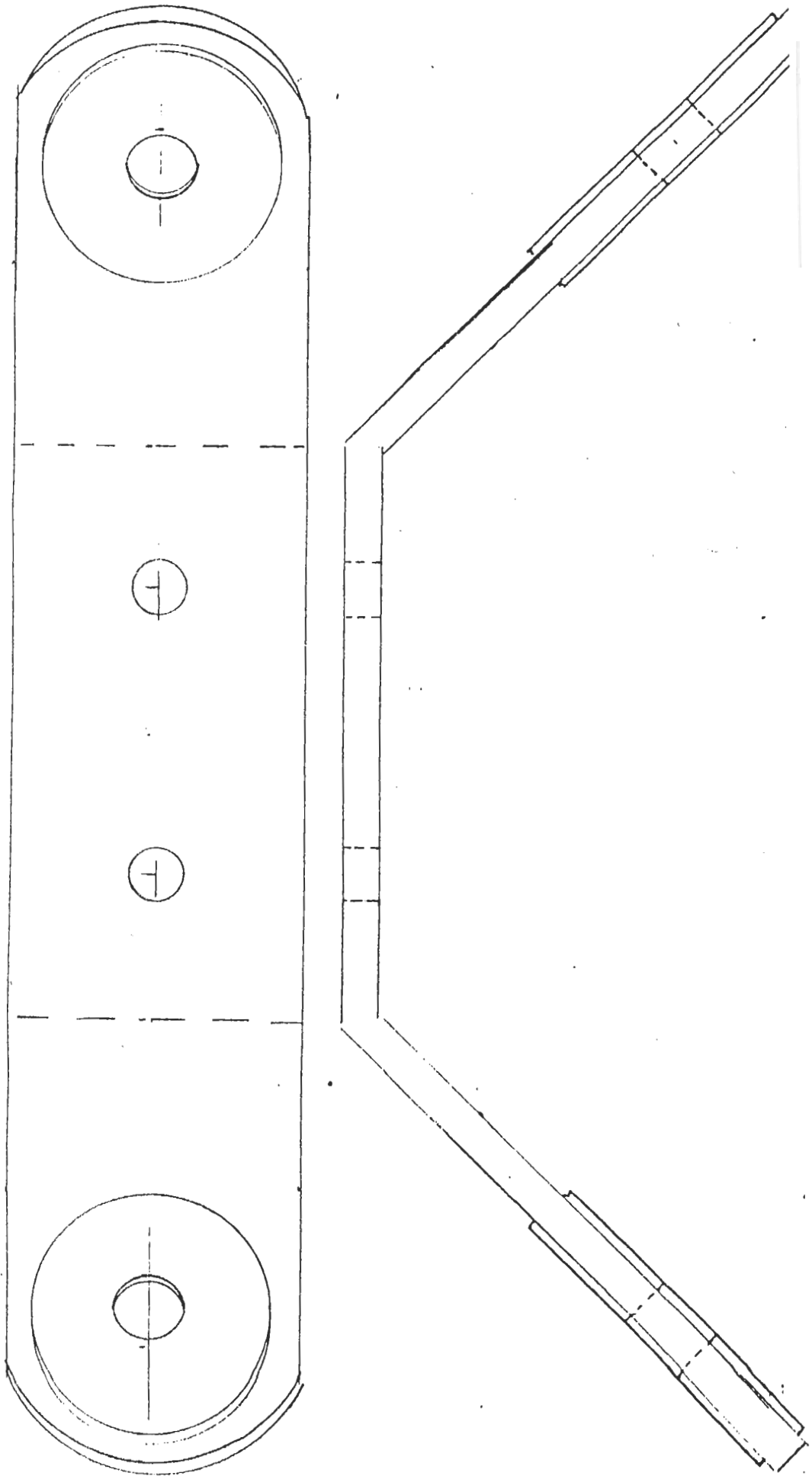
TIE-ROD SYSTEM INSTALLATION INSTRUCTIONS

- 1) Chainplate Back-Up Plates - Remove existing back-up plates (if any) and replace with new plates.
- 2) Mast-Step Tang - Remove bolts that temporarily hold tang and mast-step together. Reinstall mast-step in the original location. Leave the fiberglass cloth between the mast-step and tang to limit corrosion.
- 3) Tie-Rods - Install between chainplate and mast-step tang. To avoid tearing out the mast-step don't tighten the tie-rods until the mast has been installed and shrouds have been tightened. The tie-rods should then be snugged up until the tie-rods are straight.
- 4) Using tie-rod system will increase the compression load on the deck. Therefore, Sparkman and Stephens strongly recommends that the deck be firmly secured to the deck support post and that the post be firmly secured to the hull (mast-support structure). This should prevent the deck from rising and give the deck adequate strength to take the compression load.

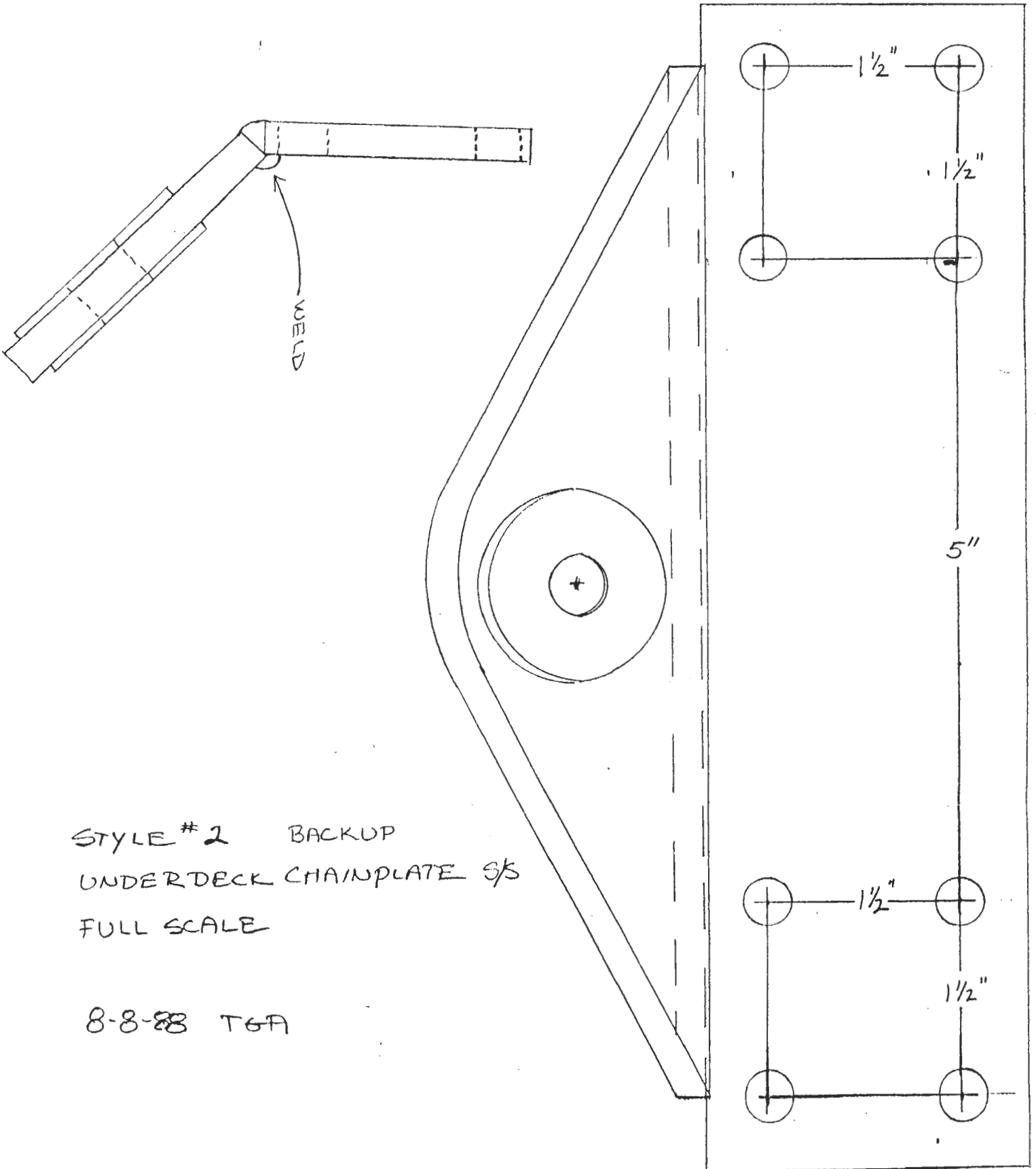


STYLE # 1 BACKUP
UNDER DECK CHAINPLATE SIS
FULL SCALE

8-8-88 TGA

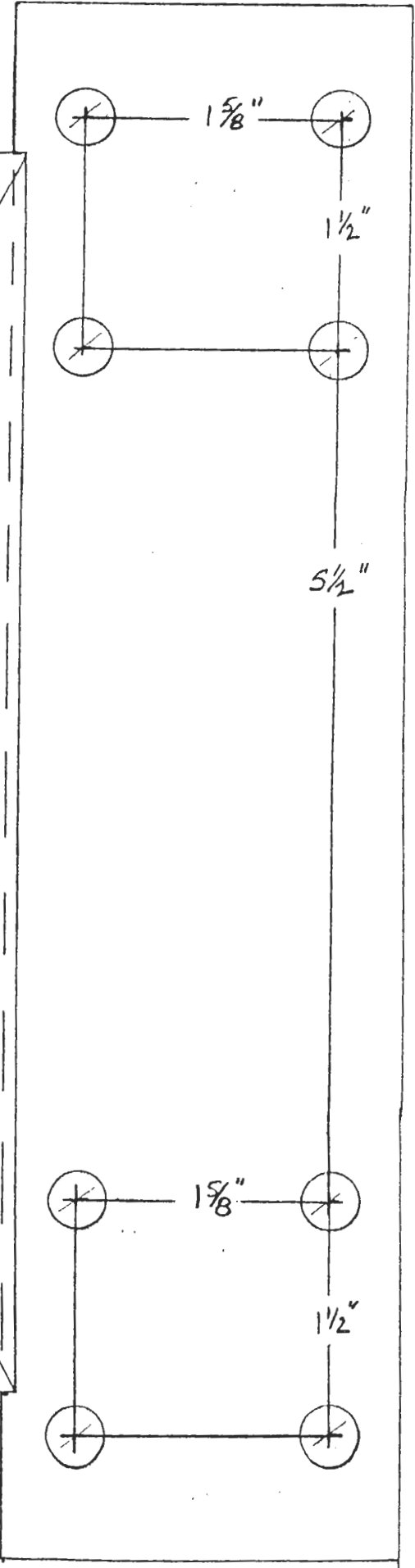
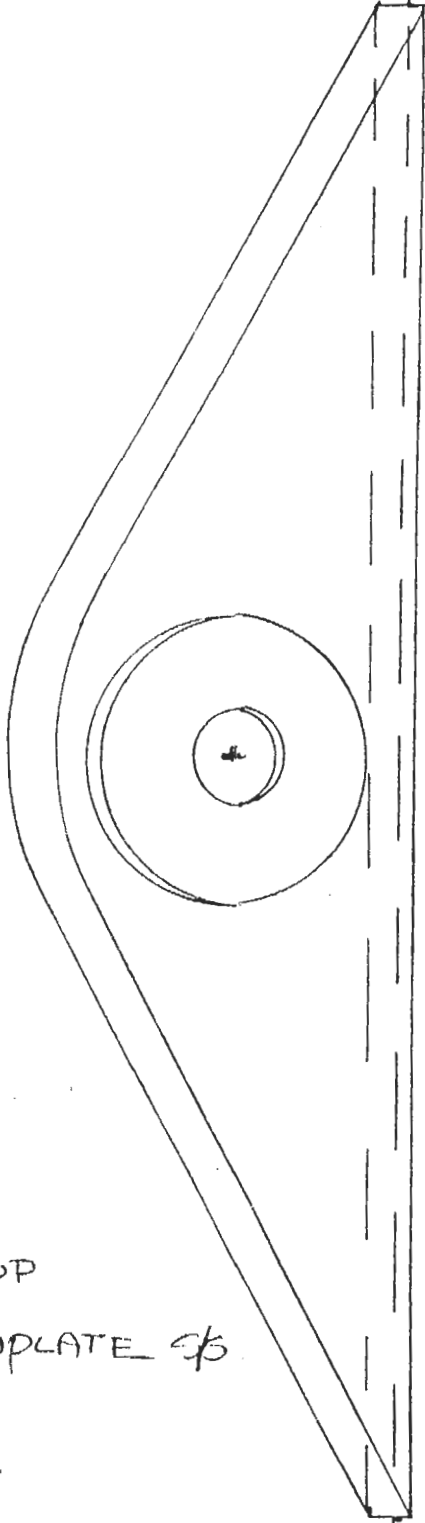
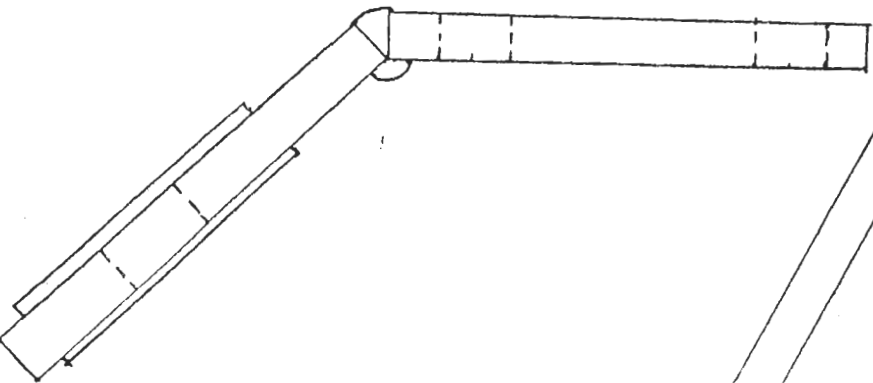


MAST STEP TANK S/S
 TYP. ALL BOATS
 FULL SCALE
 8-8-88 TGA



STYLE #2 BACKUP
 UNDERDECK CHAINPLATE S/S
 FULL SCALE

8-8-88 TGA



STYLE # 3 BACKUP
UNDERDECK CHAINPLATE $\frac{5}{8}$
FULL SCALE
8-8-88 TGA